

build with
trust



Neptune Commercial
Limited



Our History

Neptune Commercial Ltd. (NCL)

Neptune Commercial Ltd. was established in 1977 as a specialized construction company, dedicated to providing a complete solution to local development needs through efficient and quality services.



A sister concern of United Group, NCL was established in 1977 with the intention of being a nation builder in the post war era. In its first two and a half decades, it was engaged in national projects like 'Coastal Embankment Rehabilitation', 'Irrigation', 'Town Protection', 'Runway and Highway Maintenance', 'Construction of Power Generation Plants', 'Building Construction' etc. It is ranked as one of the foremost companies in specialized hydro engineering works with vast experience in coastal embankment, river training, river erosion protection and other similar projects. It also develops state of the art commercial spaces catering to the needs of the burgeoning corporate scene in Dhaka today. As such, our properties have housed prestigious clients, including the World Bank, British DFID, SEDF, The City Bank, etc. among others.

At present, NCL is overseeing some major commercial construction works, including a mixed retail and office building in North Gulshan, called Gulshan Centre Point, and a multi-hotel and retail development adjacent to the Hazrat Shahjalal International Airport, possibly the largest project of its kind in the country. The latter is especially important, owing to the fact that the 700 rooms in the hotels and the 1,000,000 sft retail space will be a landmark development of the nation, boosting both local commerce as well as the tourism sectors.

However, we are nowhere close to reaching the end of the line. By Allah's Grace, we are constructing a world class gated compound at Satarkul, 2 km east of American Embassy which will become the new benchmark of living standards, not only in Bangladesh but in this region as well.

Vision & Mission



Our vision is to make this company one of the best construction company in the region.

Our Mission is to provide our employees with an honest and helpful working environment, where every employee individually and collectively, can dedicate themselves to providing our customers with exceptional workmanship, extraordinary service, and professional integrity.



Management apparatus



Hasan Mahmood Raja

Chairman

From a humble beginning in 1978, United Group has now become an icon in the business world, an epitome of commercial excellence. Its success, by the grace of Allah, lies in the courage to embark onto new business ventures based on sound foresight, ingenuity and skillful execution. The name Hasan Mahmood Raja is synonymous with the United Group. In a span of 37 years of his business career, he successfully led the Group to establish many diversified business enterprises. Notable among them are 8 Power plants producing 700mw, United Hospital, Nursing College, University, Maritime Academy and United City. Commitment, integrity and sincerity are the key values of all his various business achievements. His charming personality, strong belief in Allah, focus in flawless implementation of every single business on time, constant brainstorming for generating new ideas, efficiency in management and overriding moral guidance are a few traits of his character that has molded the core values of United Group business undertakings. His love and empathy for his fellow countrymen, especially the underprivileged and downtrodden people, is translated through the United Trust as well as his personal patronization of high schools, Madrassa, orphanages for boys and girls as well as establishment of general and specialized hospitals.



Abul Kalam Azad

Managing Director

Mr. Abul Kalam Azad was born in February 1955. After completion of his Bachelor of Science, he joined United Group as one of the Founding Directors. Presently, he is the Vice – Chairman of United Group. Best known for his dynamism, he is a key entrepreneur of the United Group, especially in Real Estate sector.

At the moment, he is the Managing Director of almost all the Construction and Real Estate Enterprises of the Group, notably Neptune Commercial Ltd, Neptune Land Development Ltd, United City Twin Towers Developers Ltd, United Purbachal Lands Ltd etc. He is also the Managing Director of Land Port Teknaf Ltd, one of the pioneering “Build Operate and Transfer” (BOT) project of the Govt. Besides being the General Secretary of the board of Trustees of United International University, he is also the Director of Khulna Power Company Ltd. and many other Concerns of the Group.

Well known for his benevolence within the Group, he is one of the Trustees of United Trust, an organ responsible for CSR.

Range of business horizon And experiences



Neptune Commercial Limited is very fortunate to be a part of nation building activities for over three decades.

Business Portfolios

- Projects of Water Resources Development - Irrigation Project Protection, River training Works, Embankment, Hydraulic and Drainage System – 1.4 Billion
- Town Protection Project – 292 Million
- Rehabilitation Project – 476.34 Million
- Sea Port (Ctg Sea Port, Teknaf land Port)
- Airport Runways (International Airport at Dhaka) - 300 Million
- Roads and Highways – 314 Million
- Tank Terminal (Ctg)
- Clock Tower (Dhaka City Clock)
- EPZ (Dhaka and Ctg)
- Hospital (United Hospital)
- Power Plant (732 Mega Watt)
- Industry (Spinning Mill, Polymer)
- Multinational Industry
- City Residential Buildings (Luxury and High Raise)
- Commercial Building (Summit Tower)
- Universities
- Tradings of Construction Material

Business Licences

- Bangladesh Power Development Board (BPDB)
- Bangladesh Water Development Board (BWDB)
- Civil Aviation Authority of Bangladesh (CAAB)
- Roads & Highways Department (RHD)
- Public Works Department (PWD)
- Chittagong Port Authority (CPA)
- Bangladesh Land Port Authority (BLPA)

Water resources development project

As a nation building actor Neptune Commercial Limited served the public sector by working with Water Development Board in the following challenging projects :

- Coastal Embankment Rehabilitation Project along 16.2 km coastal belts of Patenga and Anowara at Chittagong costing 516 million Taka and 292 million Taka respectively.
- Coastal Embankment Rehabilitation Project along 16.46 km coastal belts of Companigonj, Noakhali costing 476.34 million Taka.
- Meghna Dhanagoda Irrigation Project's River Bank Revetment works costing 104.2 million Taka.



Roads & Highways Construction



For over two decades Neptune Commercial Ltd. has been providing superior road construction skills to its Client. Noteworthy, NCL has built its reputation for cost effective solutions and professional approach to timely project completion over the years.

This record is primarily due to the creativity and innovative spirit of our human resources, which have been the heart of NCL for so many years.

Airport Runway

NCL developed the Runway Overlay Project at the then Hazrat Shahjalal International Airport under Civil Aviation Authority of Bangladesh (CAAB) in association with Hanjin Engineering and construction Co. Ltd. The project value is more than Tk . 300.00 million.



Building Construction

NCL has been privileged to work on some of the most distinguished and high-profile commercial and residential buildings.



NCL accomplished luxurious commercial building named United House, a 6-storied building with multi level basements at 10 Gulshan Avenue. It was retreated in respect to earthquake by retrofit works as per design and drawing by High-Point Rendel, a British consultancy firm as per the California Standard (USA). It involved the proper application of SIKA adhesive and M.S plate for strengthening shear and flexural stresses in the critical sections of the whole structure. This is one of the modern technical know-how and applied for the first time in Bangladesh. It was completed in December 2002 and the total value was Tk. 150.00 million. It was designed by ARC Architectural Consultants, Texture Consultants and High-Point Rendel.



NCL also constructed a high-rise commercial building named Summit Centre at 18, Kawran Bazar, Dhaka. It is a 14-storied building based on cast-in-situ bored pile foundation. The Value of the works was more than Tk. 71.00 million.



Power Generation Plants



88 MW : DEPZ
72 MW : CEPZ
United Power Generation &
Distribution Co. Ltd (UPGD)
2008

Energy is the lifeblood that runs through the veins of the economy. Keeping that in mind UPGD was born to ensure uninterrupted power supply to the industries housed within the Export Processing Zones (EPZ) i.e. DEPZ and CEPZ with capacities 88 MW and 72 MW respectively. It is a model that is being planned to be replicated across all the EPZs of the country.

NCL has worked with UPGD in the following capacities:

Site Infrastructure

- Design and construction of pre-fabricated building of 24,000 sft. (approx) along with foundation including generator set foundation, M.S. Truss framed building etc.
- All pipe line i.e. A/C, JW, Air, Lubricating oil, Gas line etc.
- Fire-fighting and exhaust system
- Clearing, forwarding, handling & transportation of the following generators and the corresponding number of roof mounted radiators weighing 6 tons each:
 - i. 4 x Wärtsilä Finland 20V34SG weighing 130 tons and capacity 8.73 MW each
 - ii. 5 x Rolls-Royce Norway B35:40V20AG2 weighing 133 tons and capacity 9.34 MW each
 - iii. 3 x MTU Germany AOE20V4000L62
- Construction, testing of electrical & mechanical facilities of the Plant
- Supply, erection and construction of 11/33 KV Sub-station, Switchgear and electrical connections
- Supply, erection, construction & commissioning of 2 x 4 TPH Khan SPP Smoke Tube Vertical Type Exhaust Gas Boilers for production of Steam
- NCL has the credit of doing the EPC works of this project whose project cost is Tk. 436 Crore.



**53 MW
United Ashuganj Power
Limited (UAPL)
2010**

United Ashuganj Power Limited entered into a Quick Rental Contract with BPDB in December, 2010 for supplying electricity to the National Grid. The power plant attained Commercial Operation Date (COD) on 22nd June, 2011 with 53 MW production capabilities.

NCL has worked in the following capacities:

Site Infrastructure

- Design and construction of pre-fabricated building of 18,000 sft. (approx) along with foundation including generator set foundation, M.S. Truss framed building etc.
- All pipe line i.e. A/C, JW, Air, Lubricating oil, Gas line etc.
- Fire-fighting and exhaust system
- Clearing, forwarding, handling & transportation of 14 Nos. of MWM Germany TCG2032V16 Gas gen-sets weighing 51.4 tons and capacity 4 MW each and corresponding number of roof mounted radiators weighing 4 tons each.
- Construction, testing of electrical & mechanical facilities of the Plant
- Supply, erection and construction of 11/230 KV Sub-station, 70/80 MVA Power Transformer and electrical connections
- Completed within a record time frame of 120 days
- NCL has the credit of doing the EPC works of this project whose project cost is BDT 250 Crore.



40 MW Khan Jahan Ali Power Co. Limited (KJAPCL) 2011

KJAPCL, a 40 MW project, went into a contract with BPDB in July 2010, for the supply of electricity on rental basis for five years. With the plant located at Noapara, Jessore KJAPCL went into commercial operation in May 2011.



NCL has worked in the following capacities:

Site Infrastructure

- Design and construction pre-fabricated building of 10,000 sft. (approx) along with foundation including generator set foundation, M.S. Truss framed building etc.
- All pipe line i.e. A/C, JW, Air, Lubricating oil, HFO line etc.
- Fire-fighting and exhaust system
- Clearing, forwarding, handling & transportation of 5 Nos. of Wärtsilä Finland W20V32 HFO gensets weighing 130 tons and capacity 8.92 MW each and corresponding number of roof mounted radiators weighing 5 tons each
- Construction, testing of electrical & mechanical facilities of the Plant
- Supply, erection and construction 11/33 KV Substation and electrical connections
- Construction of 12 Nos. Steel (HFO) fuel tank of capacity of 10,000 MT each (for both Khulna Power Co. Ltd Unit II & Khanjahan Ali Power Co. Ltd)
- Construction of berthing jetty for unloading of fuel
- NCL has the credit of doing the EPC works of this project whose project cost is US\$ 25 million.



195 MW United Ashuganj Energy Limited (UAEL) 2015

United Ashuganj Energy Limited 195 MW Combined Cycle Modular Power Plant was commissioned on turnkey basis on 8th May 2015, officially 19 days prior to the required date. This is the 1st Joint Venture Power Project between the Public Sector and Private Sector of Bangladesh.

NCL has worked in the following capacities:

Site Infrastructure

- NCL was awarded the Engineering, Procurement & Construction (EPC) Contract on Turnkey Basis by the Sponsor with total project cost amounting to US\$ 170 million
- Scope of Works included:
 - Complete site Infrastructure with access road
 - Complete project design including Electrical, Mechanical and Civil design
 - Supply & installation of 20 units of Wärtsilä 20V34SG gas gensets with all accessories & auxiliary equipment, 20 units of Waste Heat Recovery Boilers with all accessories & auxiliary equipment, 1 unit of Steam Turbine with 16.1 MW capacity with all accessories & auxiliary equipment, 4 units of 70/80 MVA 11/230KV Power Transformers, 11/230KV Sub-station, Switch gear Equipment, 230KV GIS & Evacuation system, 4 units of 40m high steel lattice towers, Gas Regulating & metering Station, DM water plant, Barge mounted pump house, etc.
 - Design & construction of pre-fabricated steel building of 38,000 sft. (approximately) including generator set foundation, steam turbine foundation,



waste heat recovery boiler structure, M.S. Truss framed building etc.

- All pipelines i.e. Gas pipeline, Engine Cooling System, Open Cycle Turbine Cooling system, Lubricating oil, Jacket Water-Air cooled Radiator pipeline, Air Conditioning, etc.
- Logistics handling including clearing, forwarding, handling & transportation of all machinery & equipment including 20 units of gensets each weighing 130 tons, corresponding number of roof mounted radiators weighing 5 tons each, 20 Nos. of Waste Heat Recovery Boilers, 1 No. of Steam Turbine Generator (STG), 4 units of 70/80 MVA transformers, etc.
- Complete Fire-fighting and exhaust system.





28 MW Gas Fired Power Plant Shajahanullah Power Generation Co. Ltd.

Shajahanullah Power Generation Co. Ltd. (SPGCL) initiated commercial operation during the month of October in the year 2013. Located at Kumargaon, Sylhet, it is supplying quality electricity to Rural Electrification Board of Bangladesh, upholding United Group's vision of assisting the nation in eradicating power crisis & load shedding.



NCL has worked in the following capacities:

Site Infrastructure

- Design and construction of pre-fabricated building of 10,000 sft. (approximately) along with foundation including generator set foundation, M.S. Truss framed building etc.
- All pipe line i.e. A/C, JW, Air, Lubricating oil, Gas line etc.
- Fire-fighting and exhaust system
- Clearing, forwarding, handling & transportation of 3 units of Rolls-Royce Norway B35:40V20AG2 Gas gen-sets weighing 137 tons each and having capacity of 9.34 MW each and corresponding number of roof mounted radiators weighing 6 tons each.
- Construction, testing of electrical & mechanical facilities of the Plant
- Supply, erection and construction of 11/33 KV Substation, 2 Units of 16/20 MVA Power Transformers and electrical connection
- NCL has the credit of doing the EPC works of this project whose project cost is BDT 175 Crores



115 MW HFO Fired Power Plant Khulna Power Company Ltd. Unit II

The 115 MW Extension of the original Khulna Power Company Ltd, located at Goalpara, Khulna. KPCL II entered into a contract with BPDB on 23rd June 2010. The plant initiated commercial operation on 29th May 2011.



NCL has worked in the following capacities:

Site Infrastructure

- Design and construction pre-fabricated building of housing 7 Gensets and all related auxiliaries along with foundation including generator set foundation, M.S. Truss framed building etc.
- All pipe line i.e. A/C, JW, Air, Lubricating oil, HFO line, HFO heating system, etc.
- Fire-fighting and exhaust system
- Clearing, forwarding, handling & transportation of 7 Nos. of Wärtsilä Finland 18V46 HFO gensets with per genset weighing 359 tons and having a capacity of 17 MW each and corresponding number of roof mounted radiators weighing 5 tons each
- Construction, testing of electrical & mechanical facilities of the Plant
- Supply, erection and construction 11/132 KV Substation with 2 Units of 40/50 MVA & 1 Unit of 65/75 MVA Power Transformers and electrical connections
- Construction of 12 Nos. Steel (HFO) fuel tank of capacity of 10,000 MT each (for both Khulna Power Co. Ltd Unit II & Khanjahan Ali Power Co. Ltd)
- NCL has the credit of doing the EPC works of this project whose project cost is US\$70 million.



**110 MW
Khulna Power
Company Limited (KPCL)
1998**

United Group, along with other co-owners, set about to create a pioneering solution. Thus, in 1998, Khulna Power Company Limited, a barge mounted power plant, the first Independent Power Producer in the private sector of the country began operation at Khulna. The power plant has achieved an excellent track record of producing 110 MW power since commissioning.

NCL has worked in the following capacities:

Site Infrastructure

- Design and construction of the mooring lagoon.
- Clearing, forwarding, handling & transportation 19 Nos. of Wärtsilä Finland 18V32 gen-sets weighing 128 tons and capacity 6.5 MW each.
- Supply, erection and construction 11/132 KV substation and electrical connections
- The total project cost was US\$105 million.
- The local EPC works of the project, amounting to US\$ 8 million, was also carried out by Neptune Commercial Limited.



Logistics

Neptune Commercial Ltd. provided turnkey EPC solution to multiple power generation projects where NCL's scope included providing logistics service solution including customs clearing, forwarding, handling & transportation of power generation equipment from Chittagong / Mongla Seaport to plants sites at Khulna, Dhaka, Ashuganj, Sylhet, Chittagong, etc.

The transported equipment included Gensets (engine & alternator coupled together), Engines, Turbines, Alternators, Radiators, Power Transformers, Waste Heat Recovery Boilers, Condensers, Exhaust Stacks, Overhead Cranes, etc. in single/coupled/mounted form weighing up to 358.870 Tons for the highest single transported component (Wärtsilä 18V46 Gensets).

In the most recent project (United Ashuganj Energy Ltd.), NCL delivered 20 units of Wärtsilä Gensets, each weighing 140 Tons, 20 Units of Waste Heat Recovery Boilers, 1 Unit of a 16.1 MW Steam Turbine, 4 Units of 70/80 MVA Power Transformers, etc. All equipment was transported from

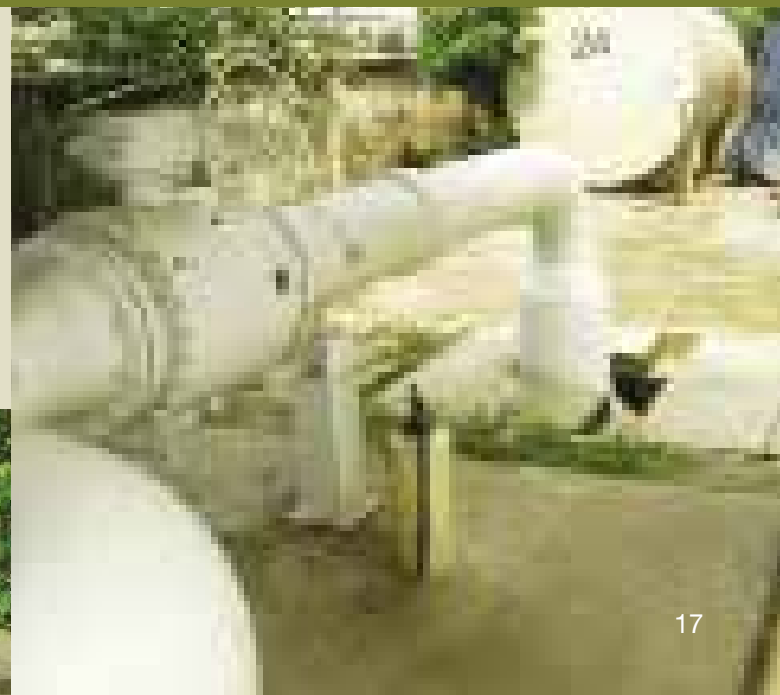


Chittagong to Ashuganj by combination of inland road & water transport, depending on the then prevailing weather & force majeure conditions.



DEPZ Gas Pipeline

Neptune Commercial Ltd constructed a gas pipeline from Titas Gas Transmission & Distribution Co. Ltd.'s Town Border Station (TBS) at Ashulia, Dhaka to UPGD's Gas Regulating & Metering Station (RMS) at Dhaka Export Processing Zone, Ganakbari, Savar, Dhaka spanning over 11 kilometers, rated at 150 psi and with a diameter of 12", a feat possessed by a very limited number of companies here in Bangladesh.



Tank Terminal

United Group, through one of its subsidiaries, is developing a modern tank terminal for bulk storage of liquid fuel products (Class III) at Anwara, Chittagong, right on the mouth of Karnaphuli River. The location offers unique advantages to the terminal, unlike any other in Bangladesh. Vessels ranging up to 35,000 MT shall be able to deliver & receive liquid fuel from the terminal, with standard & optimized pumping rates (as per vessel capacity). With access to 4 jetty's, the terminal shall allow unprecedented flexibility for handling simultaneous bulk loading / unloading operations for multiple vessels. The facility shall initially have 10 tanks, each of capacity 10,000 MT, for a total terminal capacity of 100,000 MT and is being constructed following API650 design code to ensure best-in-class quality, safety and compliance with international standards, strictly adhering to NFPA 30 standards for vital safety procedures & equipment for maximum risk control.



United Land Port Teknaf Ltd. (ULPTL)

Situated on 27 acres of land on the banks of Naff River at the southwest of Bangladesh, United Land Port Teknaf Ltd. (ULPTL) is a port of transit for goods between our country and Myanmar. As it stands, since 2007 we have handled almost 8 million metric tons of goods with our modern facilities and maintaining a sustainable growth of 30 percent.

Since 2006, NCL undertook massive infrastructure development that includes earth filling, construction of embankment office building, warehouses, boundary walls, approach roads, jetties, passenger terminal, rest house, pontoons etc. ULPTL now stands out to be the most picturesque and comprehensive port unit providing one stop solution for exporters and importers alike.



Landmark Constructions



United Property Solutions Ltd. (UPSL)

Projects like United Hasna Hena, Unity & Neptune Heights (among many others) are located at the most luxurious, prominent regions of Dhaka. UPSL ensure that our customers enjoy the tranquility of their homes in style, substance & safety. Currently, it is also concentrating on building management, maintenance and security, meaning its properties will continue to look the way it does when it hands over the keys to our valued clientele.



United International University

This is a pride project of the Group and it aims to develop the university as one of the premier seats of higher studies not only within the country but beyond focusing on quality education and research work.

It has its very own custom-built campus since September, 2005 that has eight floors including two basements with about 80,000 square feet floor space.

Gunze United Ltd.

In Bangladesh the rapid growth in the RMG sector has prompted the growth of sewing thread and accessories sector over the last 20 years. United Group has taken initiative to introduce Gunze brand of sewing threads in this country by forming a Joint Venture Company – the Gunze United Ltd. in March 2012, in collaboration with 118 years old Gunze Ltd. of Japan.

A 3 storied modern factory building built on 4 consecutive plots over an area of 8481 sqm in DEPZ. This unique factory building has over 1,05,000 sqft of floor space.





United International University (New Permanent Campus)

United Group has started to build United International University's permanent campus at United City, Satarkul in their own land. The land is about 25 acres. The construction work of the 20 storied building with a basement has started in June, 2014. The new campus will be facilitated with all modern technologies and well equipped laboratories for the students.

NCL Work Responsibilities:

- Design & Planning of whole project.
- Engineering of the project.
- Construction machinery and equipment supply and arranged for the project.
- Unload and load construction materials.
- Erect Construction forms and scaffolding.
- Mix and pour concrete with own batching plant and pump.
- Heavy equipment operation like tower crane, pump, batching plant, excavator, bull dozer.
- Central A/C work.
- Lift installation and services.



United Maritime Academy

United Maritime Academy (UMA), one of the latest enterprises of United Group, started sailing in February 2012 with its first intake. Presently, UMA is running pre-sea training programs for deck and engineering cadets in combination with HNC & HND programs in Nautical Science and Marine Engineering awarded by Scottish Qualification Authority.



United Hospital Ltd.

United Hospital Ltd (UHL) was born out of a vision to provide a complete and one-stop healthcare solution to the people. Opening its door in August 2006 and being situated beside the picturesque Gulshan Lake, this is one of the largest referral hospital in the private sector in Bangladesh with a capacity of 450 beds spread over a covered area of about 450,000 sft.

The hospital, with modern and upto date equipment, provides services in almost all the major disciplines. Of the over 30 departments, some have been bunched together under Centres of Excellence and includes Cardiac Centre (cardiology and Cardiac Surgery), Oncology Centre (Medical, Radiation & Surgical units and Nuclear Medicine), Emergency & Trauma Centre (including Orthopaedics), Mother & Child Centre (O&G, Neonatology & Paediatrics), Neuro Centre (Neuro Medicine and Neuro Surgery), Renal Centre (Nephrology, Dialysis & Urology) and Critical Care Centre (CCU, ICU, CICU, NICU, PICU & HDUs). The hospital has dedicated about 100 beds for critical care centre.



Dhaka Medical College & Hospital

NCL Constructed Hospital Building named operation Theatre (OT) Complex at Dhaka Medical College & Hospital, Dhaka. based on raft foundation designed for 11 storied building having floor area of 25000 sft at each floor. The Value of the infrastructure including electrical, mechanical & plumbing was Tk. 110.00 million which is funded by ADB Assisted 2nd Health and Family Planning Services Project.

The scope of work included the following :

- Raft foundation
- Superstructure up to 5th store with single basement floor
- 12 nos operation theater room
- Electrical & mechanical works
- Site improvement works.



IPCO

The Airport Hotel & Retail Project, a mega project just adjacent to the Hazrat Shahjalal International Airport, is a key acquisition which the Group is developing jointly with both foreign and local partners.

The esteemed project, on the Civil Aviation land, by Dhaka-Tongi Highway is a complex, comprising of seven buildings, over an area of 2,81,610 sft that encompasses a 5 star and a 3 star Hotel, a Banquet Hall, a retail shopping complex and a mega car-parking. The work of this mega project is in progress.





Some Key features of the Project:

- 386 Numbers of 5-Star category Hotel rooms, including 1 (one) 10,000 sft. Presidential Suite.
- 240 Numbers (Expandable up-to 280 rooms) of 3-Star category Luxurious Hotel suites.
- 2 (Two) Swimming pools with Jacuzzi as well as Gymnasium, Spa and wellness centers.
- 10 (Ten) Restaurants, Coffee-shops, Bar, drinks corner and a Roof-top restaurant.
- Top-end Executive facilities, meeting rooms, Dining facilities.
- 16 High-speed lifts for Hotels and 09 Lifts & 24 Escalators for Shopping arcade.
- Shopping Arcade of more than 600 shops, including Super-shop & Mega shops.
- 4 (four) Cinema Halls, with separate entry with dedicated lifts and adjacent Modern Food-court.
- Large Banquet-Hall with separate kitchen and meeting room facilities.
- Inter-connected but Separate underground service facilities & Cargo dock for all the buildings.
- Car parking with 1596 parking facilities.



Gulshan Centre Point

A blend of post-modern and contemporary urban design, this shall be a commanding edifice in the Dhaka skyline.

Right from the drawing boards to the building blocks, we have crafted a 26-storied energy efficient mixed-use development conveniently located at North Gulshan.

NCL Work Responsibilities:

- Design & Planning of whole project.
- Engineering of the project.
- Construction machinery and equipment supply and arranged for the project.
- Unload and load construction materials.
- Erect Construction forms and scaffolding.
- Mix and pour concrete with own batching plant and pump.
- Heavy equipment operation like tower crane, pump, batching plant, excavator, bull dozer.
- World class interior finishing work for United Group Corporate Office & DCC.
- Central A/C work.
- Lift installation and services.

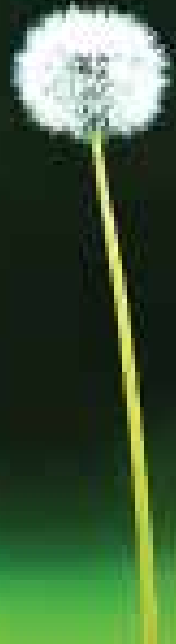
Harmoniously Segregated

The dignity of the corporate world and the vibrance of the retail arena coexist in harmony through the establishment of independent entry points through separate access roads.

It is a perfect embodiment of the yin and yang, striking a balance between two very different functional spheres.

Beating Heart of Gulshan

At the heart of the neo central business district of Gulshan 2, it is within easy reach of the diplomatic zones of Gulshan and Baridhara and their intimate residential neighborhoods.



United City

Neptune Land Development Ltd. (NLDL), a sister company, began its commercial operation as a premium real estate company in 2003 with United City (Member rehab 208/2004) being its flagship project. Located at stone's throw distance away from the US Embassy in Baridhara, with over 300 acres under development and 650 plots already handed over to a most excellent clientele. NLDL became one of the premier and most trusted developers of real estate projects in the country.

Now, it is time for creativity and innovation to add to the grandeur of United City; and NCL is the obvious choice for benchmarking in construction sector. It has already marked its presence in a big way with grand projects of new campus of United International University and high class condominium over a land of 8.5 and 50 acres respectively. There are many more to come.

NCL also came in a big way as a sister concern of NLDL from sand filling to design implementation. Initially, it started sand filling in the project site at Satarkul, Badda. Till now, it filled a total of 240 million cft (Cubic Feet) of sand within the project site. Besides, it has constructed more than 20 km of internal road-Network of varying width. It also installed a total of 225 electric poles in the project site.



Equipment Park



NCL Developed its own rich and efficient
Equipment

- Excavator
- Bulldozer
- Dump Truck (Mitsubishi)
- Pay Loader (Furukawa)
- Vibrating Roller (Dynapac)
- Vibro Hammer (Dynapac)
- Vibrator Mini Roller
- Crane (Link Belt)
- Concrete Mixer Machine Plant
- Submersible Pump
- Generator
- Air Compressor
- Sand Blaster Machine
- EDM
- Lowbed Trailer
- Crusher Plant
- Dredging Equipment



United Group



United Group (UG) represents a Group of Companies, which together form as one of the most diversified business houses in Bangladesh. Commencing its modest journey in 1978, the Group has now over 30 companies, power and the real estate being the prime movers in revenue earning. By Allah's Grace, the Group has firm footing almost in all business sectors of the country: Energy, Real Estate & Construction, Healthcare, Manufacturing, Education, Port & Maritime which have a significant impact on the economy today. As of now, Group's assets and annual turnover stands to be 90,000 million taka and 27,000 million taka respectively.

UG entered into power sector with the co-ownership of the first independent power company of Bangladesh with Summit Group in 1997: Khulna Power Company Ltd. (KPCL). Now the Group owns United Power Generation and Distribution Company Ltd, (UPGD), United Ashuganj Power Ltd. (UAPL), Khan Jahan Ali Power Co. Ltd. (KJAPCL), Shahjahanullah Power Generation Company Ltd. (SPGCL) and United Ashuganj Energy Ltd. (JAEL) a PPP projects are providing uninterrupted power supply of a capacity 500 MW power input.

In the Real Estate and Construction side, it has already created many landmark projects in Dhaka city. Presently, three mega projects are in the process of completion which will set new standards in this sector. Gulshan Center Point, a 26 storied state-of-the-art commercial office and retail block will be a new iconic landmark in the Gulshan skyline. An Airport Hotel and Retail project comprising a 5 star hotel, a 3 star hotel and a world class shopping mall is coming up adjacent to Hazrat Shahjalal International Airport. United City, an ultra-modern city of its own kind is coming up only about 2 km away from the American Embassy towards East on the 100 feet Madani Road.

In the Healthcare Sector, United Hospital Ltd. is currently one of the largest private sector multidisciplinary, state-of-the-art hospitals in the country with a capacity of over 450 patient-beds having 30 departments.

UG's manufacturing sector is slim but of quality. Gunze United Ltd. is the latest addition in the manufacturing sector of the Group along with Comilla Spinning Mill and United Polymer Ltd. It is a joint venture with famous Gunze Ltd. of Japan and producing sewing threads of unique quality for the RMG sector of Bangladesh.

United International University (UIU) is a non-profit, unique and timely venture by the UG in education sector of Bangladesh. Starting its journey in 2003 with only 75 students in 3 programs UIU now stands on its own campus with over 5500 students, 112 permanent and 65 part-time faculty. Its permanent campus is coming up in the picturesque United City area only 2km east of American Embassy.

Another diverse venture of the UG is the United Land Port Teknaf Ltd. situated on the bank of the Naff River near Teknaf. It is a transit for goods between our country and Myanmar. As for now, it stood out to be an example of PPP projects of the government. It is in the process of becoming a fully comprehensive port unit capable of providing a one-stop service to the exporters, importers and the government alike.

As a whole, in over three and a half decades, United Group has come a long way to become a business house of your trust. It has the honor to be supported by a dedicated staff of over 6000 hard working individuals, over fifty percent of whom are professional executives. With the continued excellent team work, innovative ideas and the support of its valued clientele, partners and customers, it hopes to become one of the finest business houses of the country.



Education

Manufacturing

**Real estate &
Construction**

Energy

Port & Maritime

Healthcare

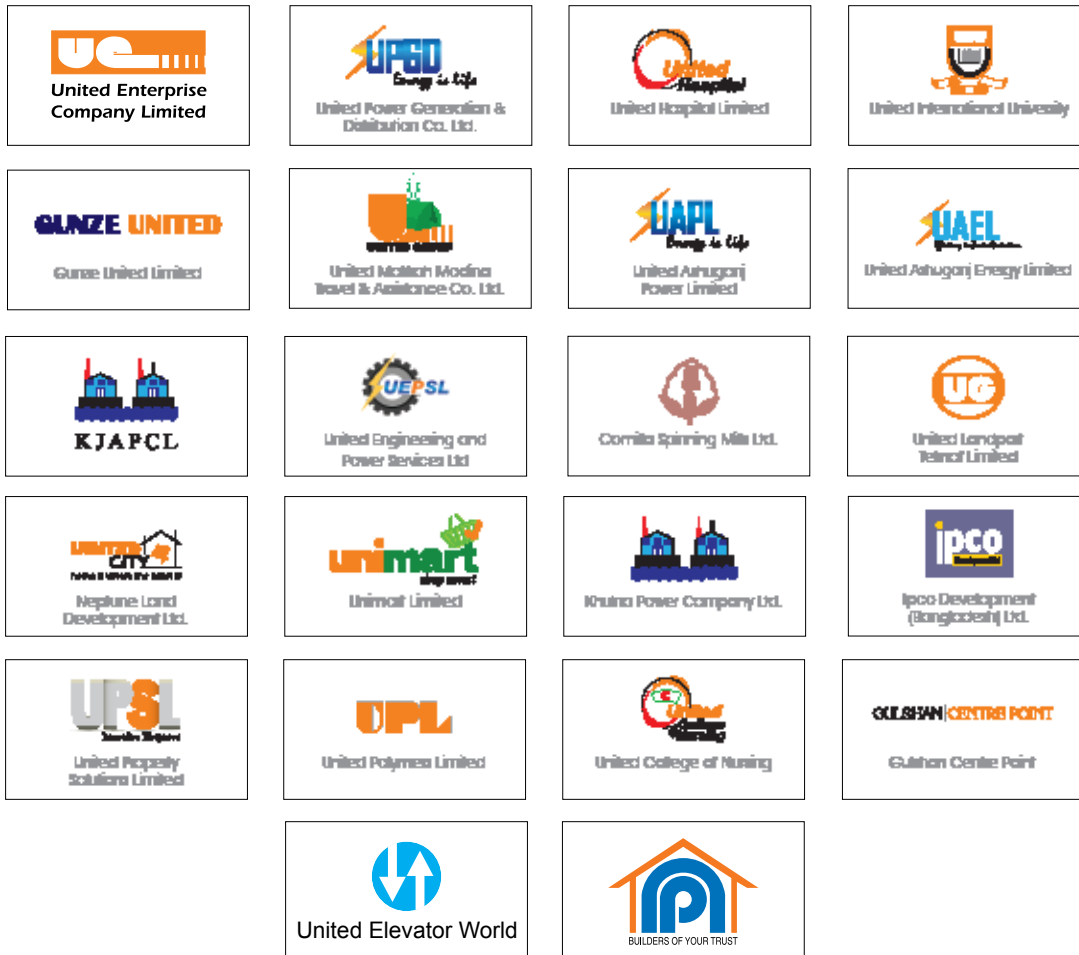
Service Sector



A Business House of your Trust



Important concerns of united group



Gulshan Centre Point : House 23-26 | Road 90 | Gulshan 2 | Dhaka 1212 | Bangladesh
Tel : +88 02 5505 2000, +88 09666 700900

www.united.com.bd
